



• •

/'

/'

• •

/'

• •

/'

• •

/'

• •

/'

• •

/'

• •

/'

• •

/'

• •

/'

• •

/'

• •

()

- 16-23 100 .
- 12,4 100 . 45,4 100 .
- 27,4-50 100 . —
- 1/3
- 40% —
- 10- 70%, 20- — 45%

Dyufur M. C., Adamson of M. D. Epidemiology alcoholic pancreatitis // Pancreas. 2003; 27: 286-290.
Ellis to me, Lerkh M. M., Uitk D. C. Genetic testing for hereditary pancreatitis: guides for indications, consultation, a consent and confidentiality // Pankreatologiya. 2001; 1: 405-415.
Mayerle J., Hoffmayster, Witt H., Lerkh M., Mössner J. Chronic pankreatit-Opredeleniye, etiology, inspection and Dtsch // Arztebl Int. 2013; 110 (22): 387-93; doi: 10.3238/arztebl.2013.0387

/

(30-60%)

§

3,5-59%

§

20-38%

§

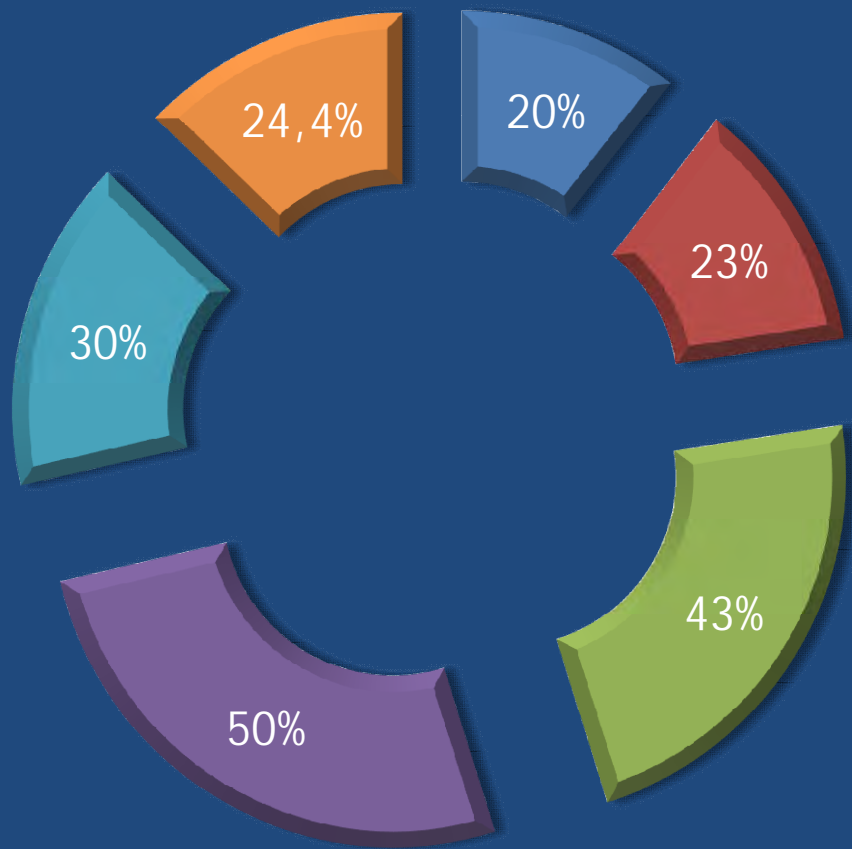
-

80%

§

14%

*Mayerle J., Hoffmayster, Witt H., Lerkh M., Mössner J. Chronic pankreatit-
Opredeleniye, etiology, inspection and Dtsch // Arztebl Int. 2013; 110 (22): 387-93;
doi: 10.3238/arztebl.2013.0387*



▲ A.L. Warshaw et al., 1980

▲ Frey CF, Mayer KL., 2003

▲ Beger H.G. et al., 1999

▲ Beger H.G. et al., 2008

▲ 1995

▲ 1995

(2009-2017)

-	n					
		(H. Beger)		-		Ch. Frey
-	67	10	21	14	10	12
- +	10	5	4		1	
	77	15	25	14	11	12

Ø

Ø

- 49
- - 65 (77,4%), -19 (22,6%)
- 89% -

III
M-ANNHEIM (A. Schneider
, 2007)

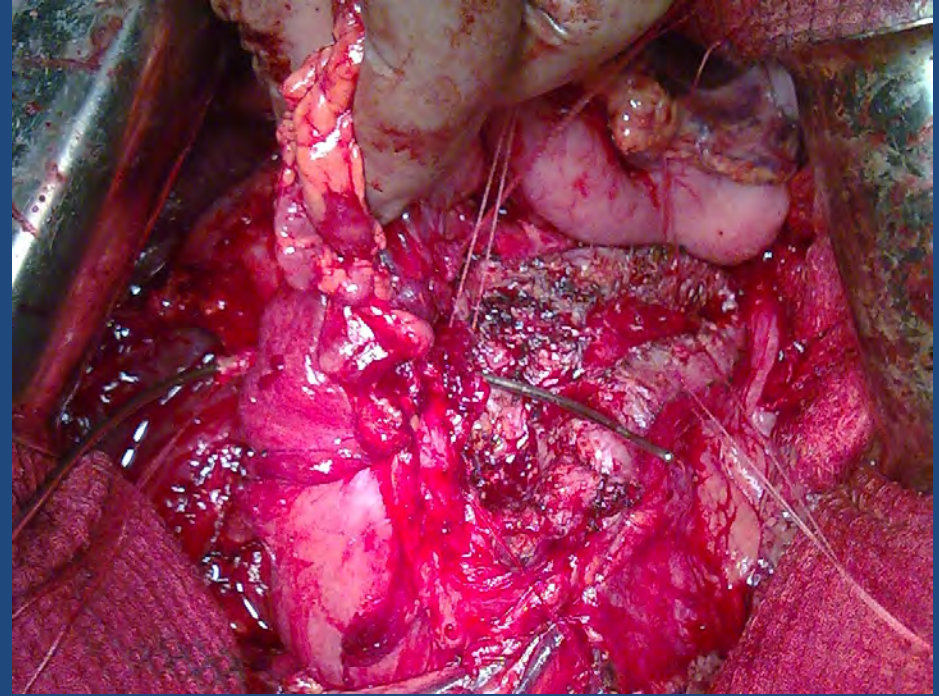
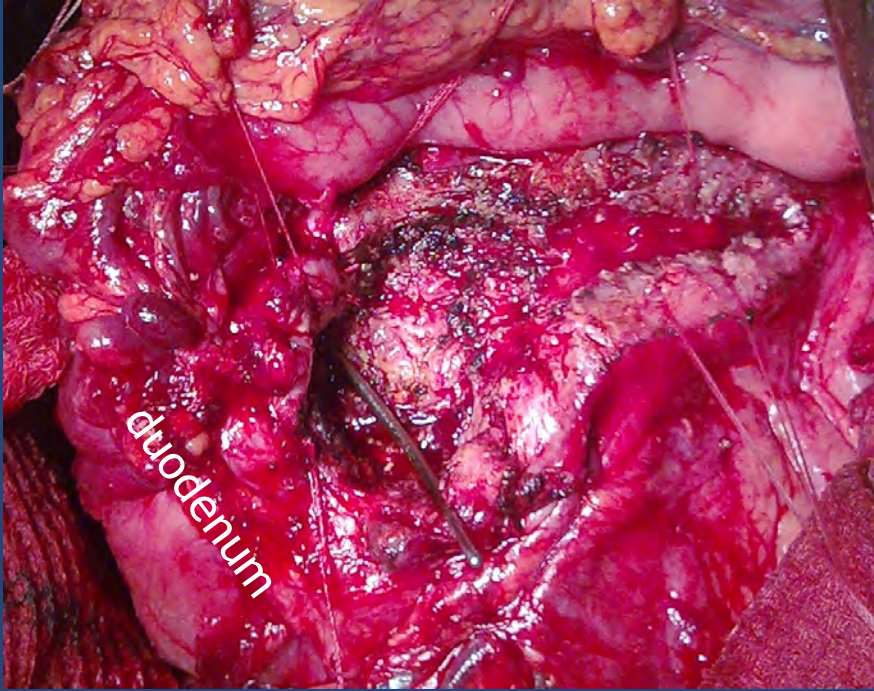
•

•

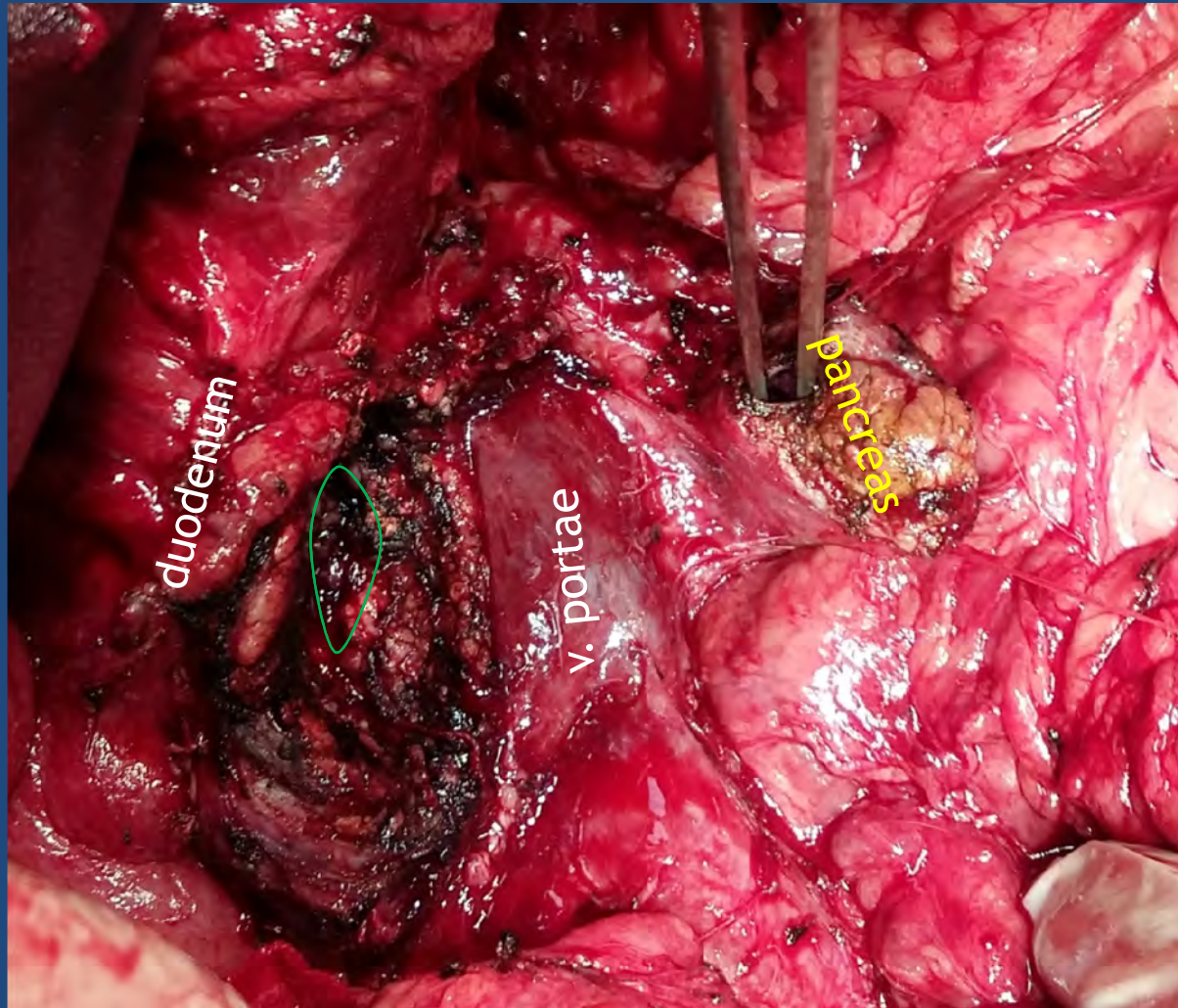
•

<p style="text-align: center;">()</p> <p>Beger) (19) (H.</p>	<p style="text-align: center;">H. Beger</p>	<p style="text-align: center;">10 9</p>
<p style="text-align: center;">)</p> <p style="text-align: center;">(9</p>	<p style="text-align: center;">H. Beger</p>	<p style="text-align: center;">4 5</p>
<p style="text-align: center;">- () - - (38)</p>	<p style="text-align: center;">Ch. Fray (2003) H. Beger</p>	<p style="text-align: center;">12 4 2 20</p>

+

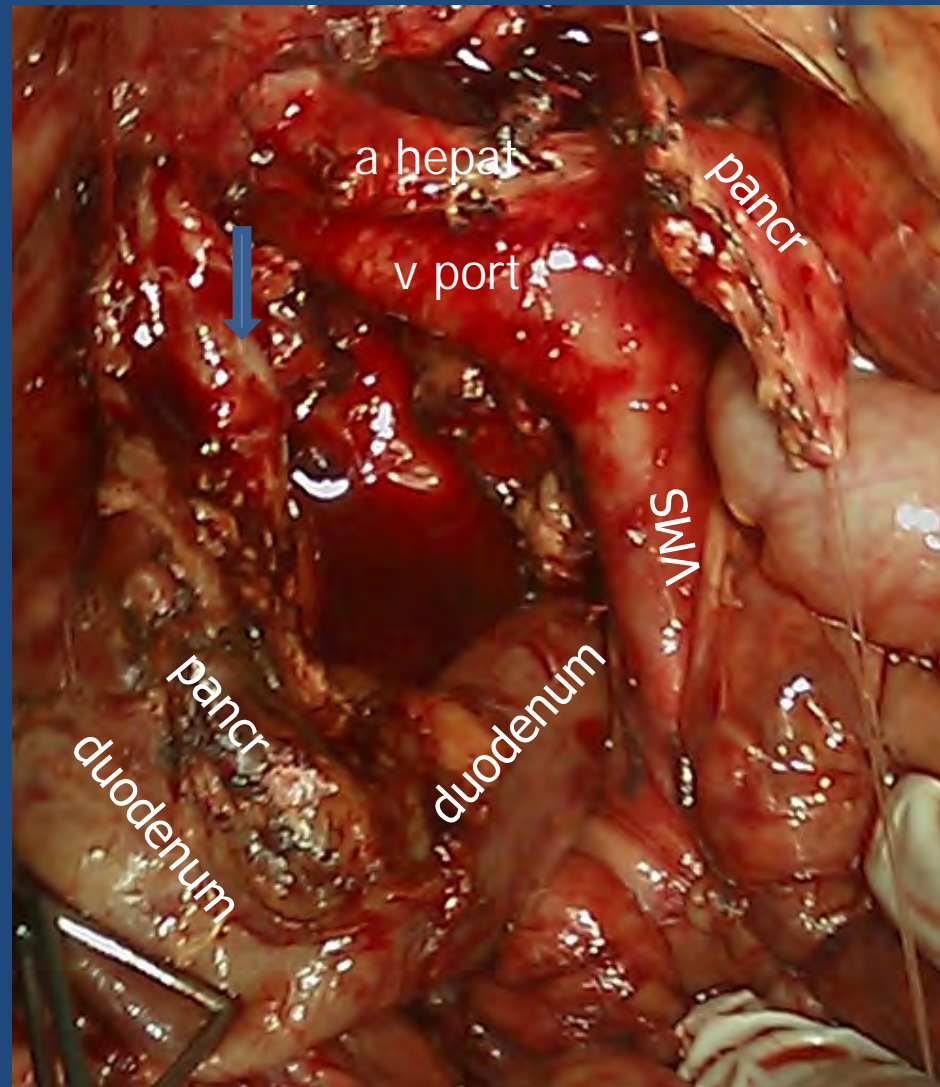


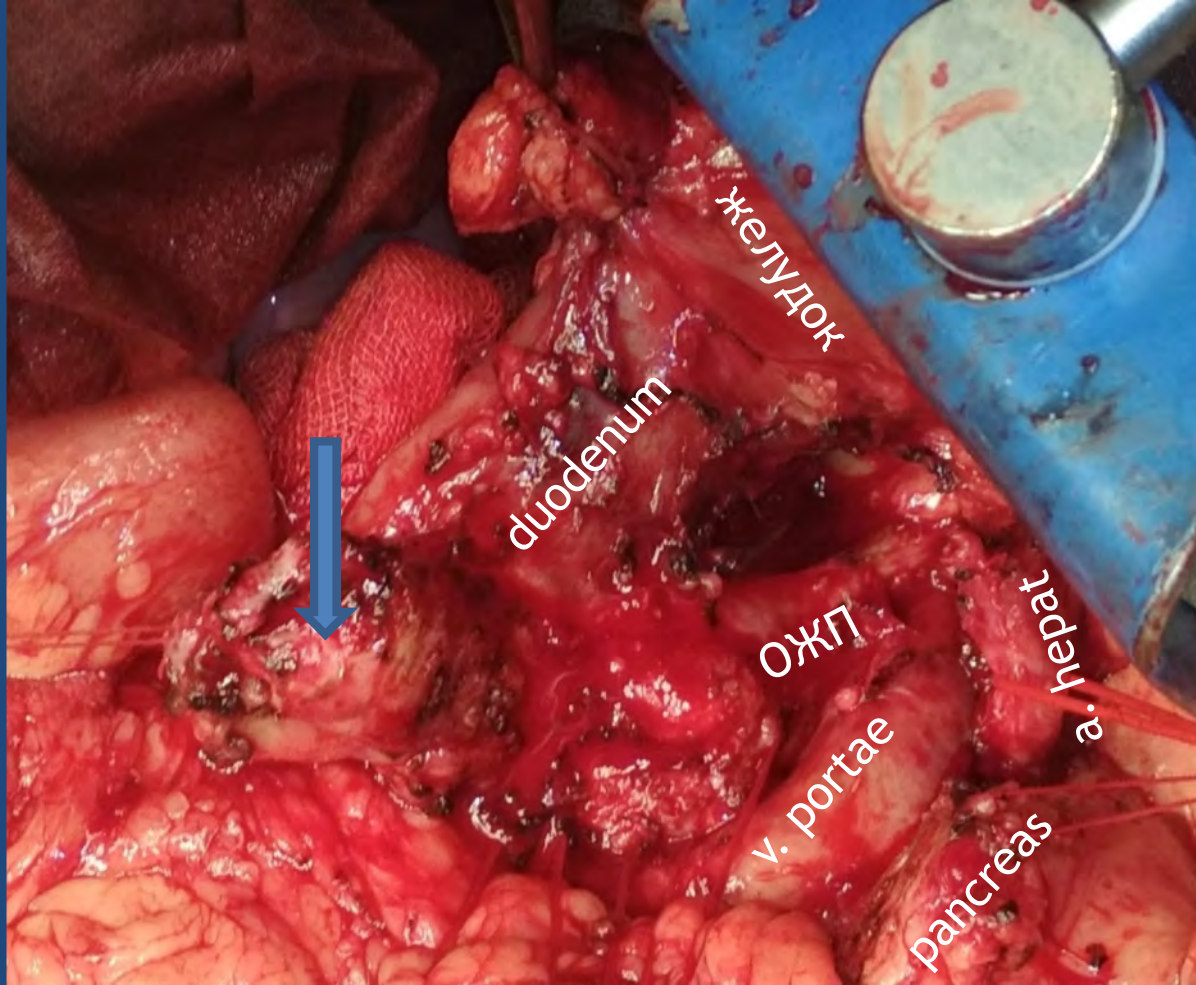
(H. Beger)



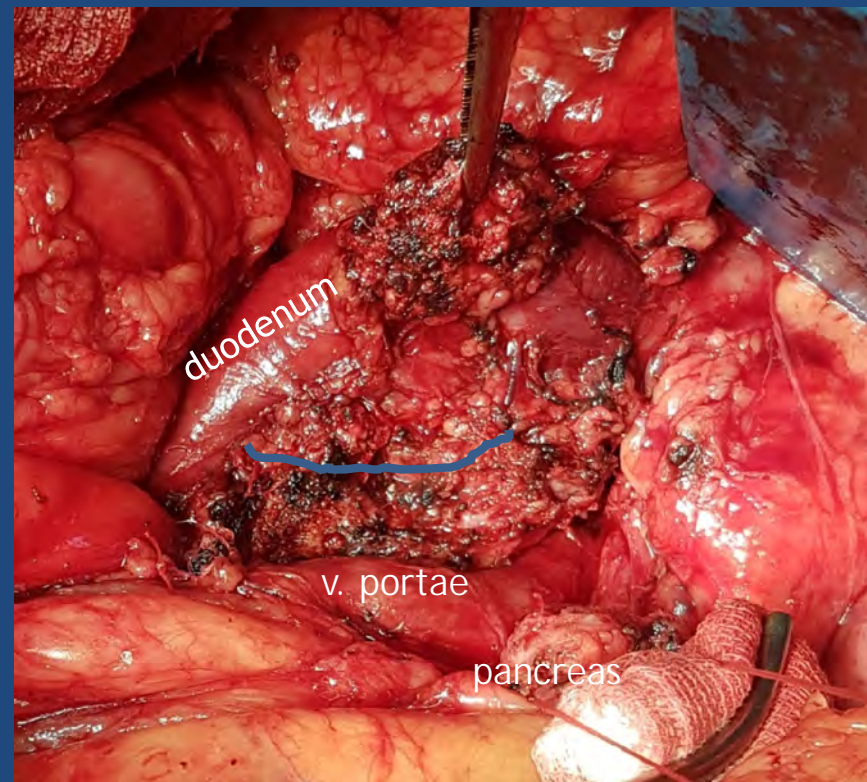
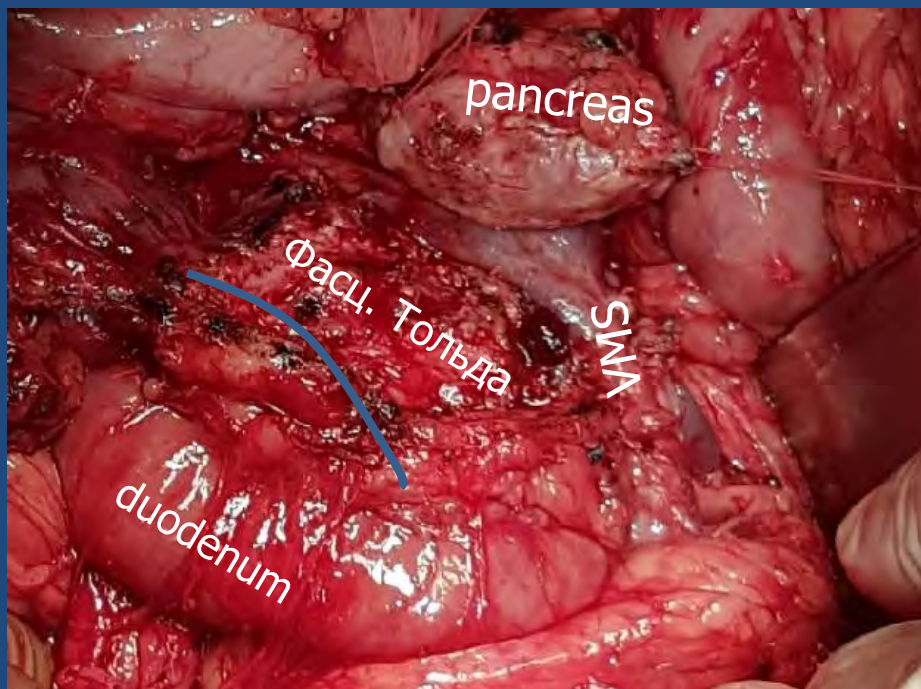
H.G. Beger

()





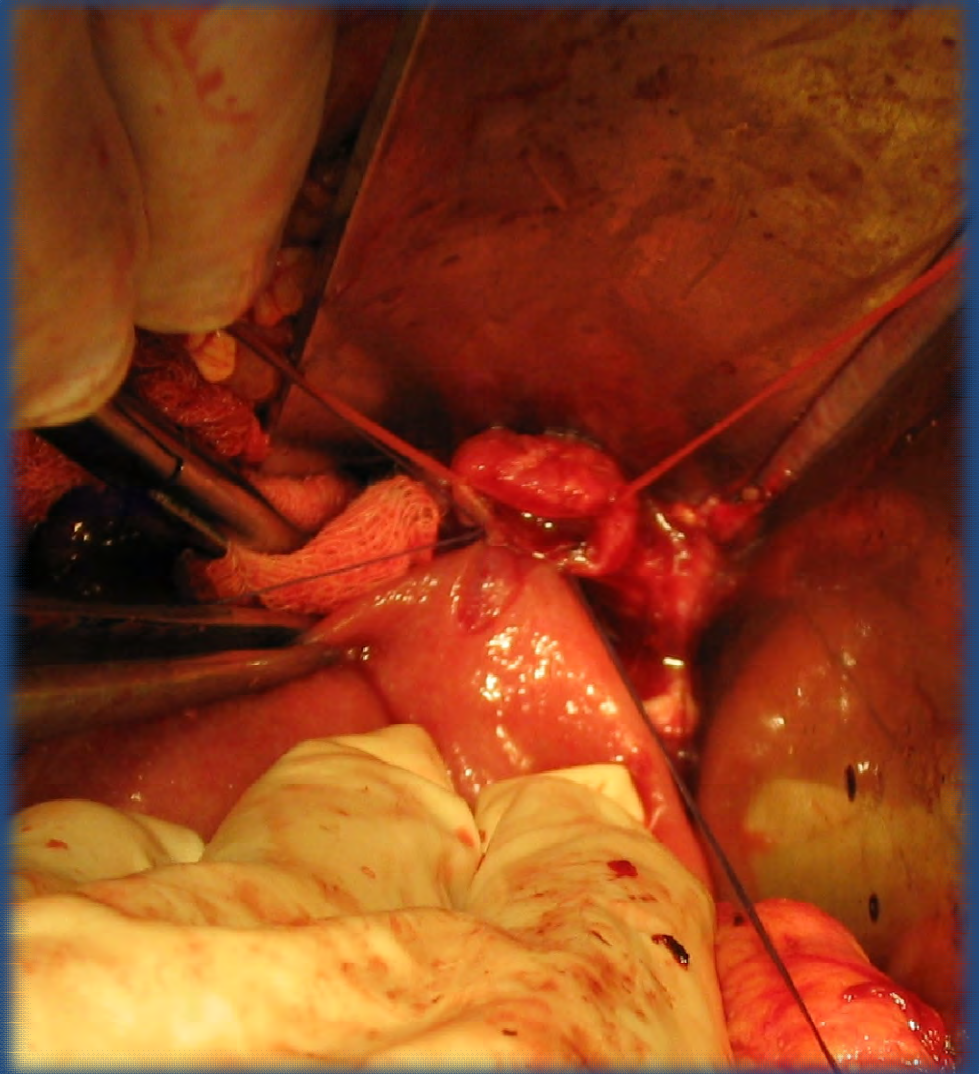
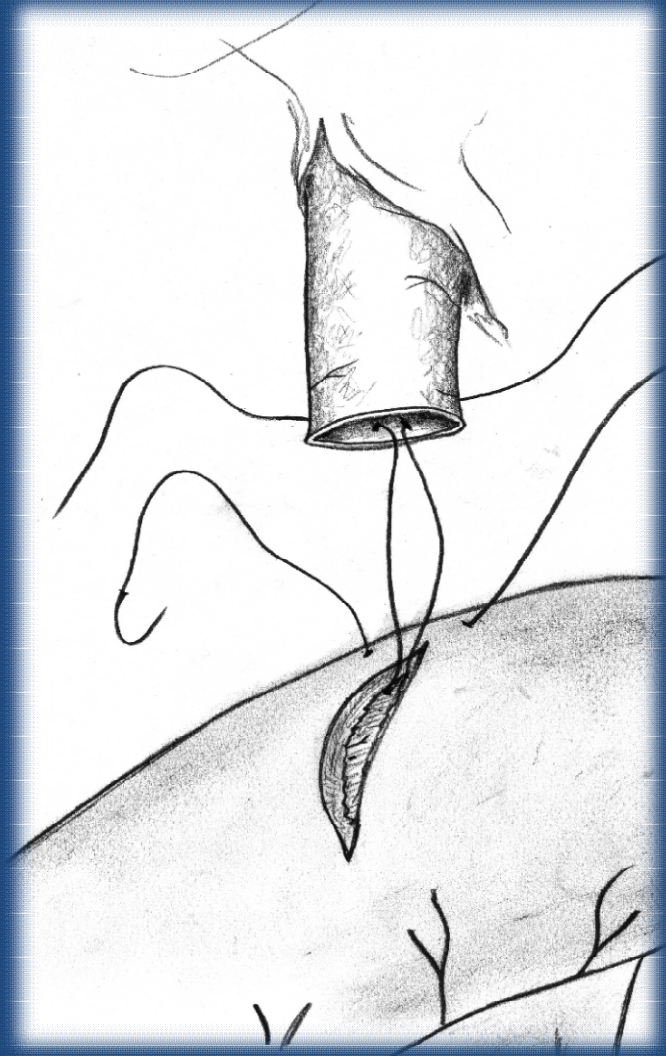
()



()

+

-

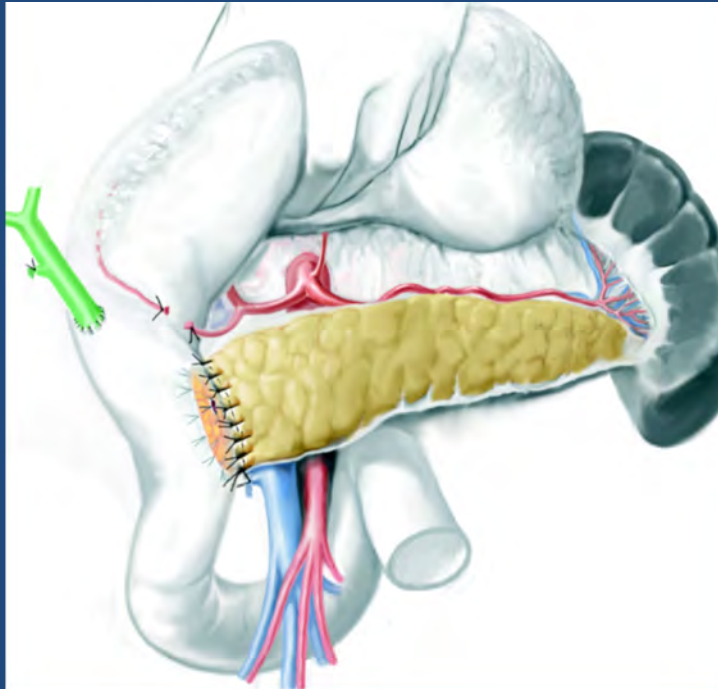


	(%)		
1. n=19	8 (42,1)	3 -2	- 6 (10) Beger - 2 (9)
2. n=9	4 (44,4)	9 - 1,5	Beger - 4 (4) - 0 (5)
3. n=38	0	-	Ch. Fray (12) (4) H. Beger (2) (20)

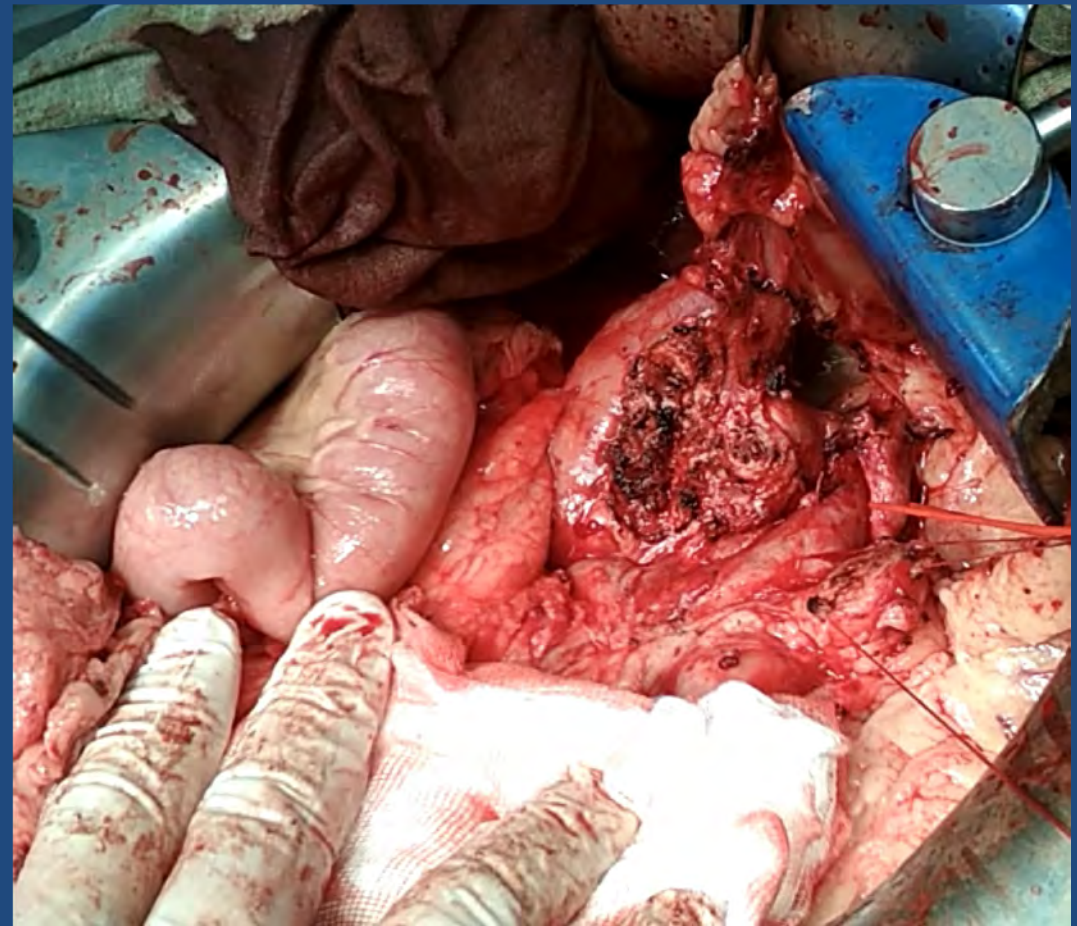
!

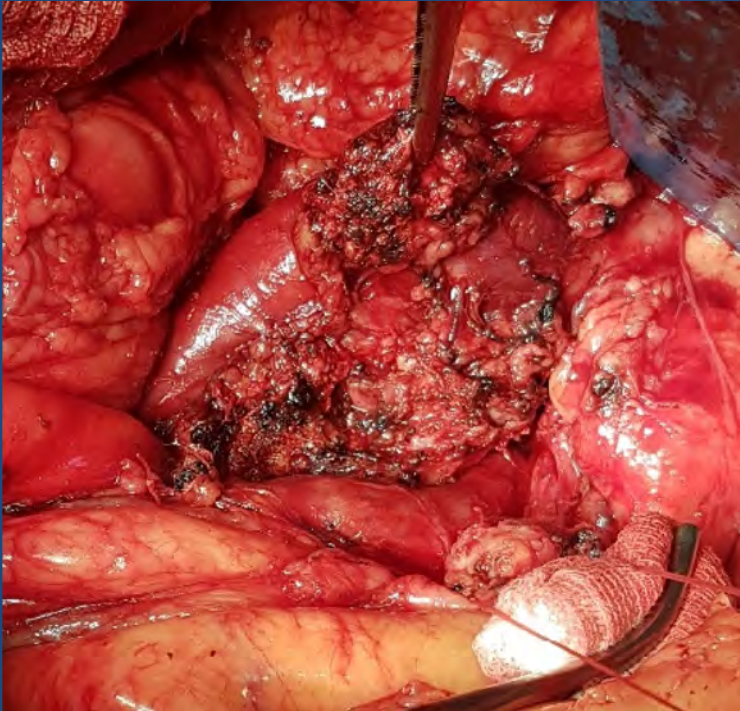
	(%)
(verso - Longmire)	11 (14,3)
()	14 (18,2)
+ ()	
H. Beger + ()	15 (19,5)
Ch. Fray + ()	12 (15,6)
	25 (32,5)
	77

(. Imaizumi, 1990)



- Imaizumi T., Hanyu F., Suzuki M. J Bil Tract Pancreas 1990; 11: 621–626
- Imaizumi T. et al. J Hepatobiliary Pancreat Surg 1995; 2: 38–44





1.

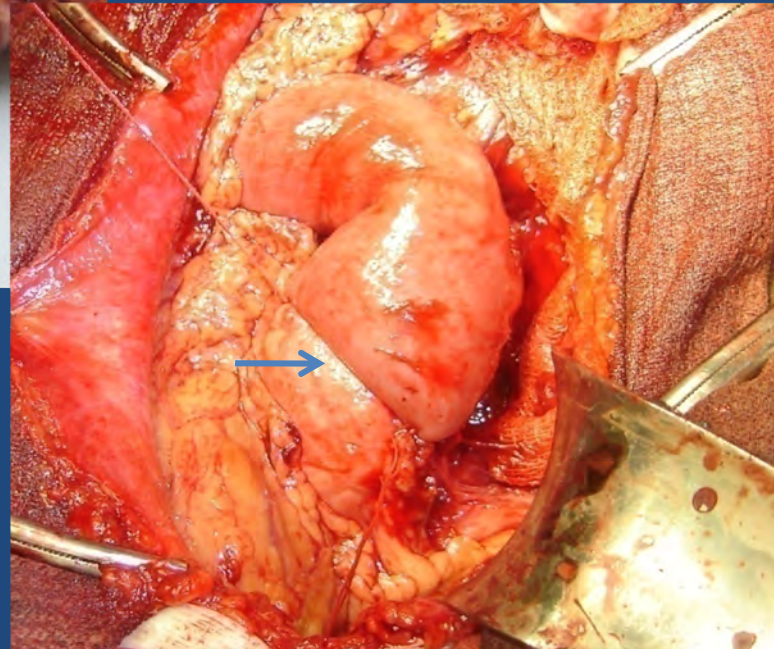
2.

1.

2.

3.

(n=11)



∅ «

-

»

(III

A.D'Egidio

(1992);

III, VI

W.H. Nealon

E.

Walser (2003)

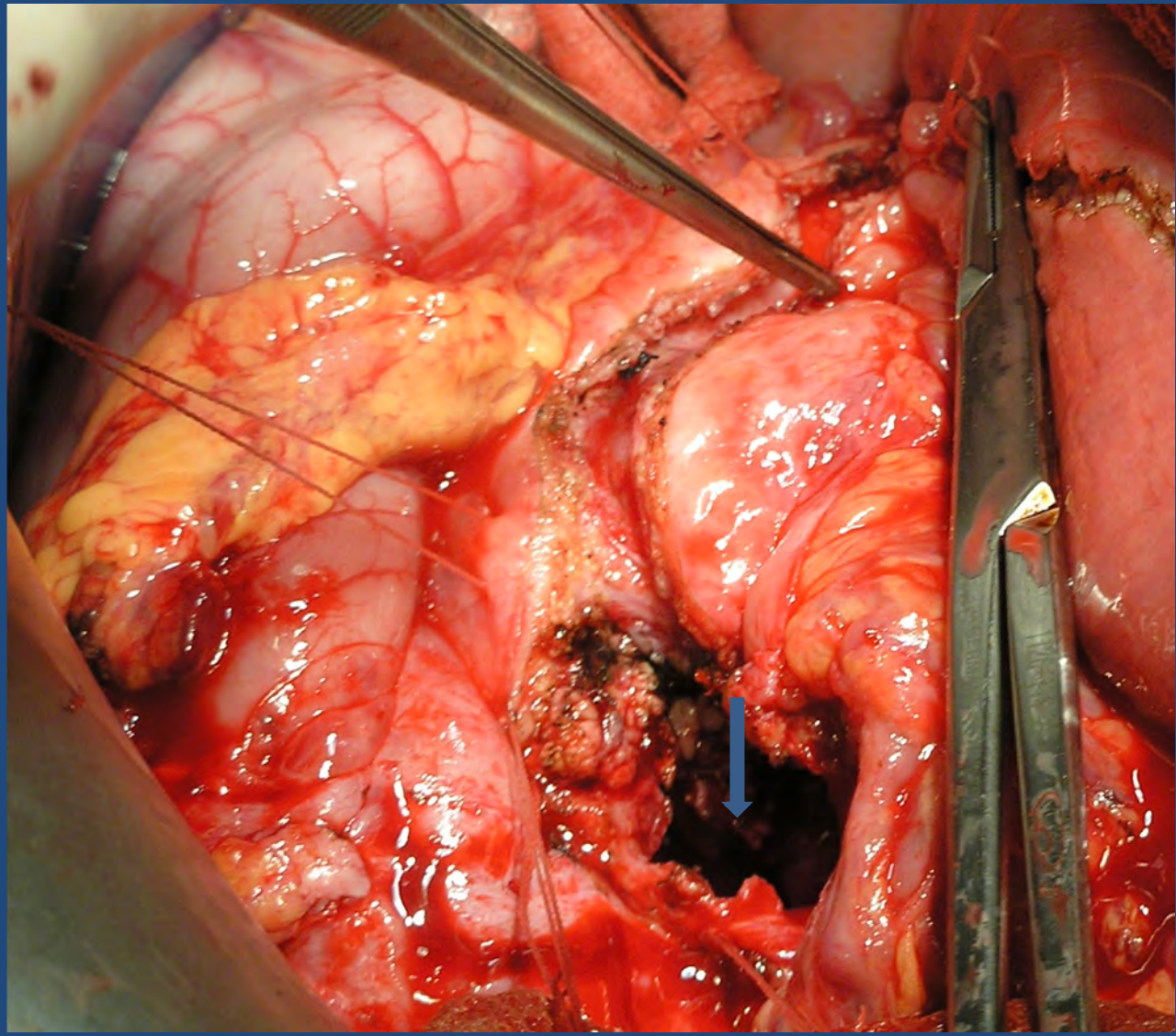


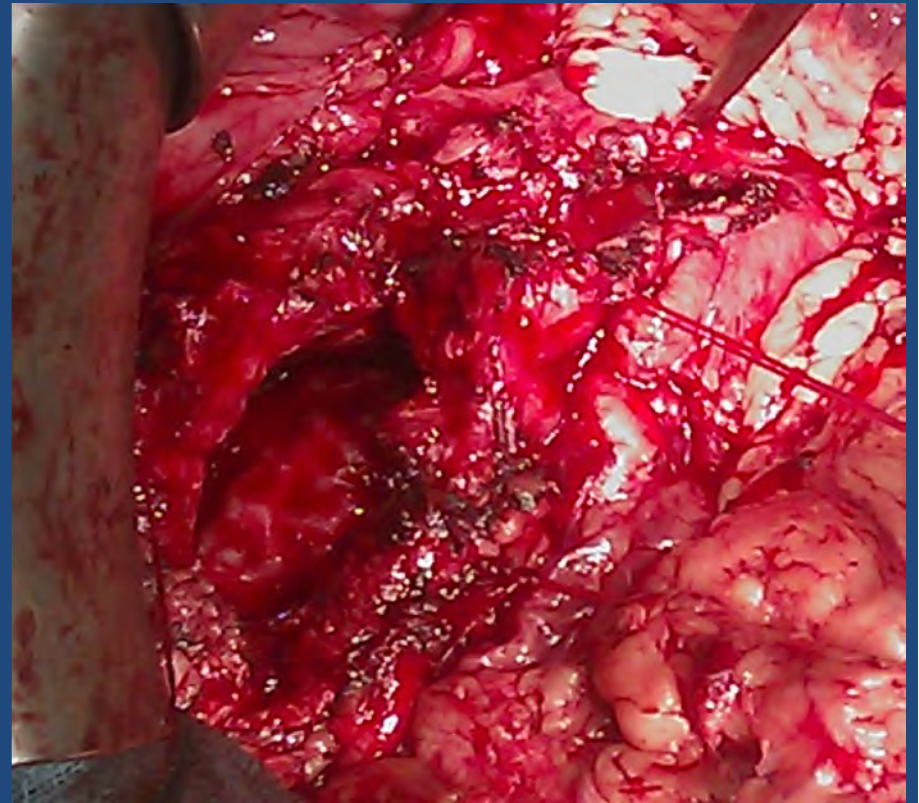
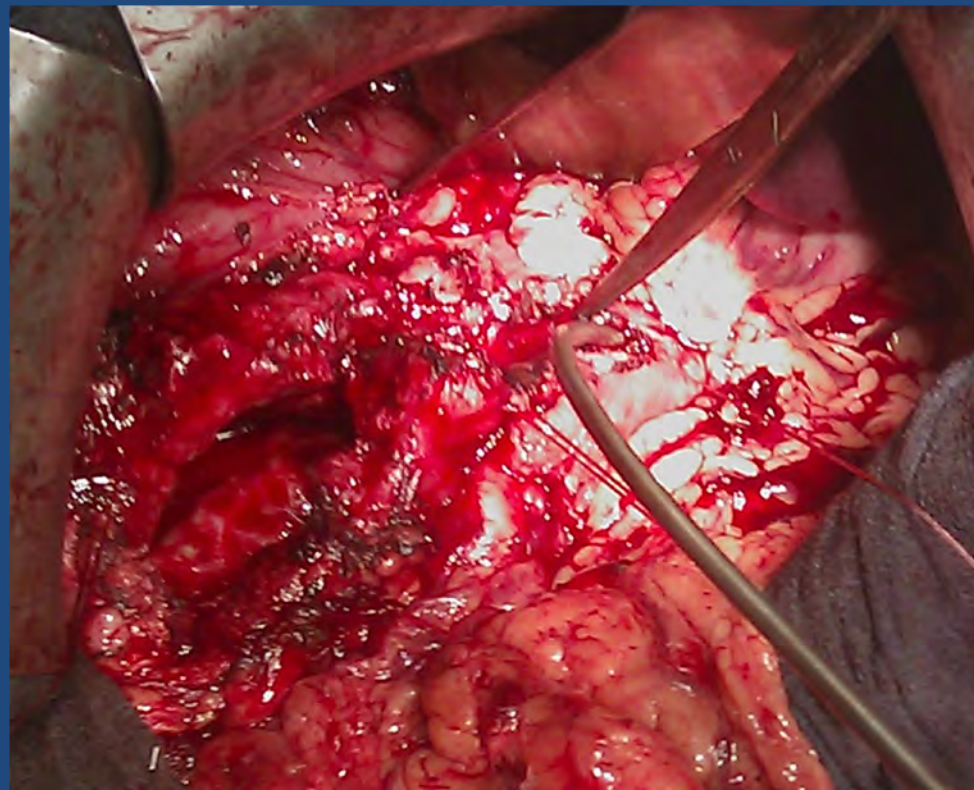
«

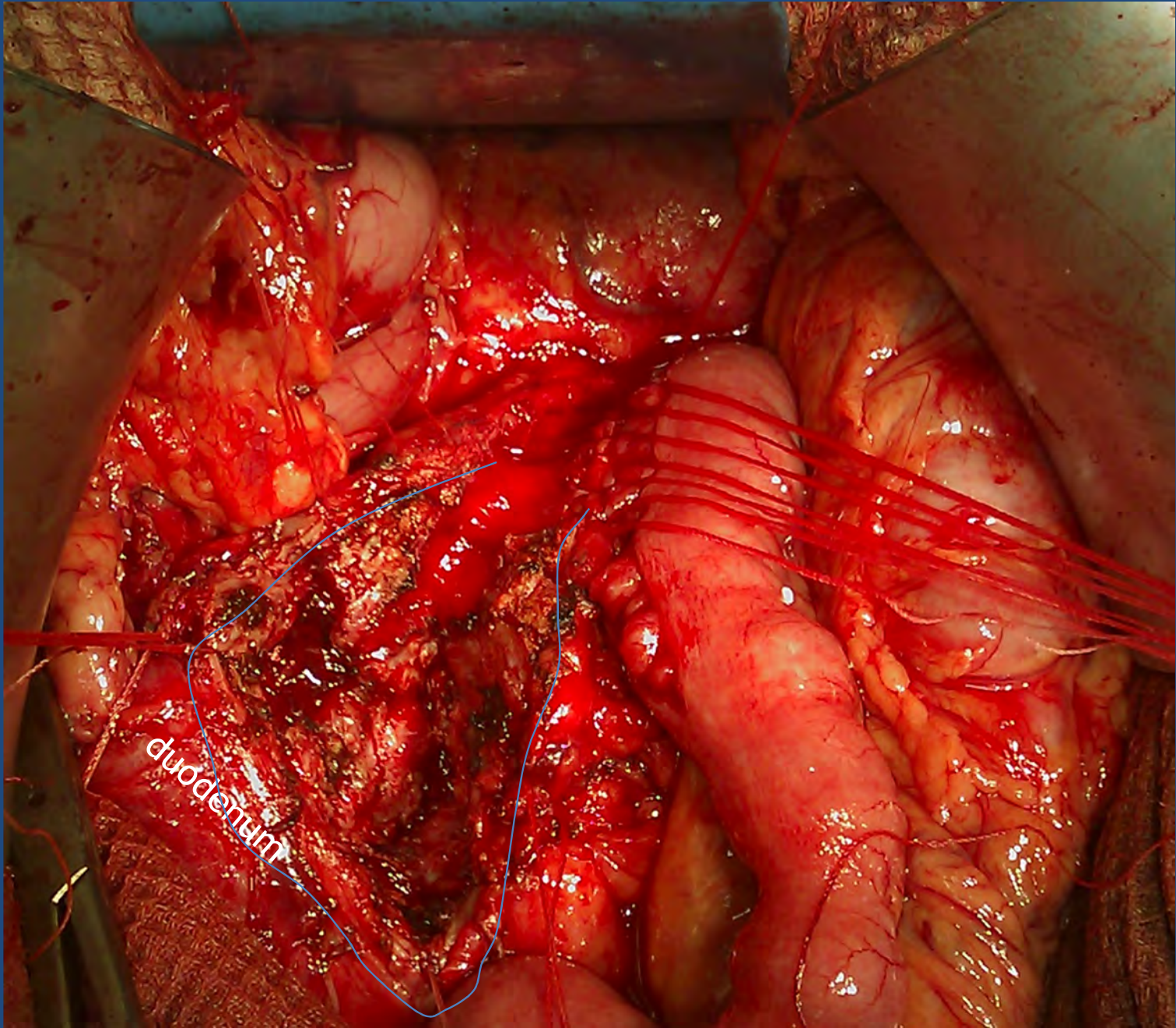
»



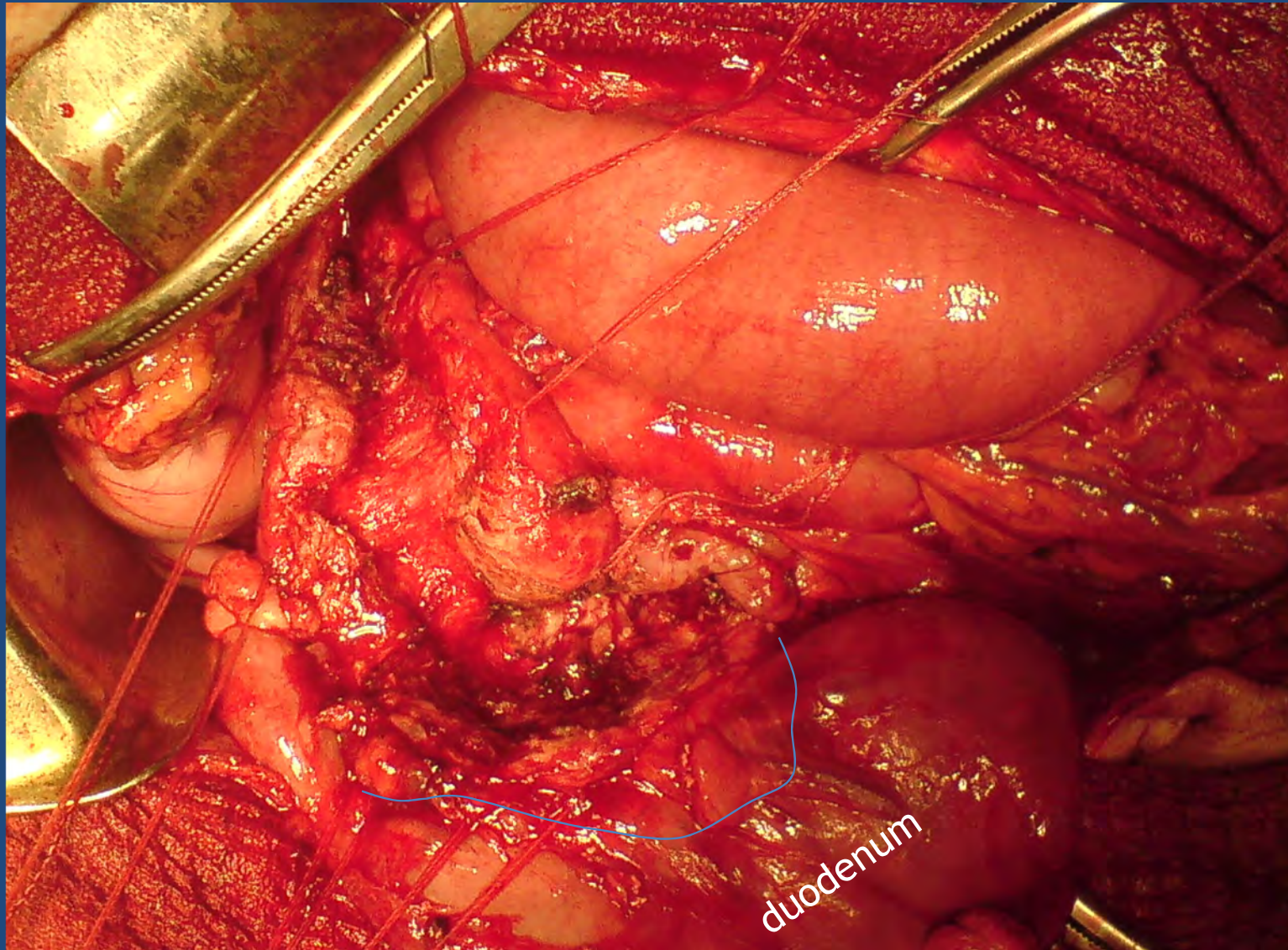
()

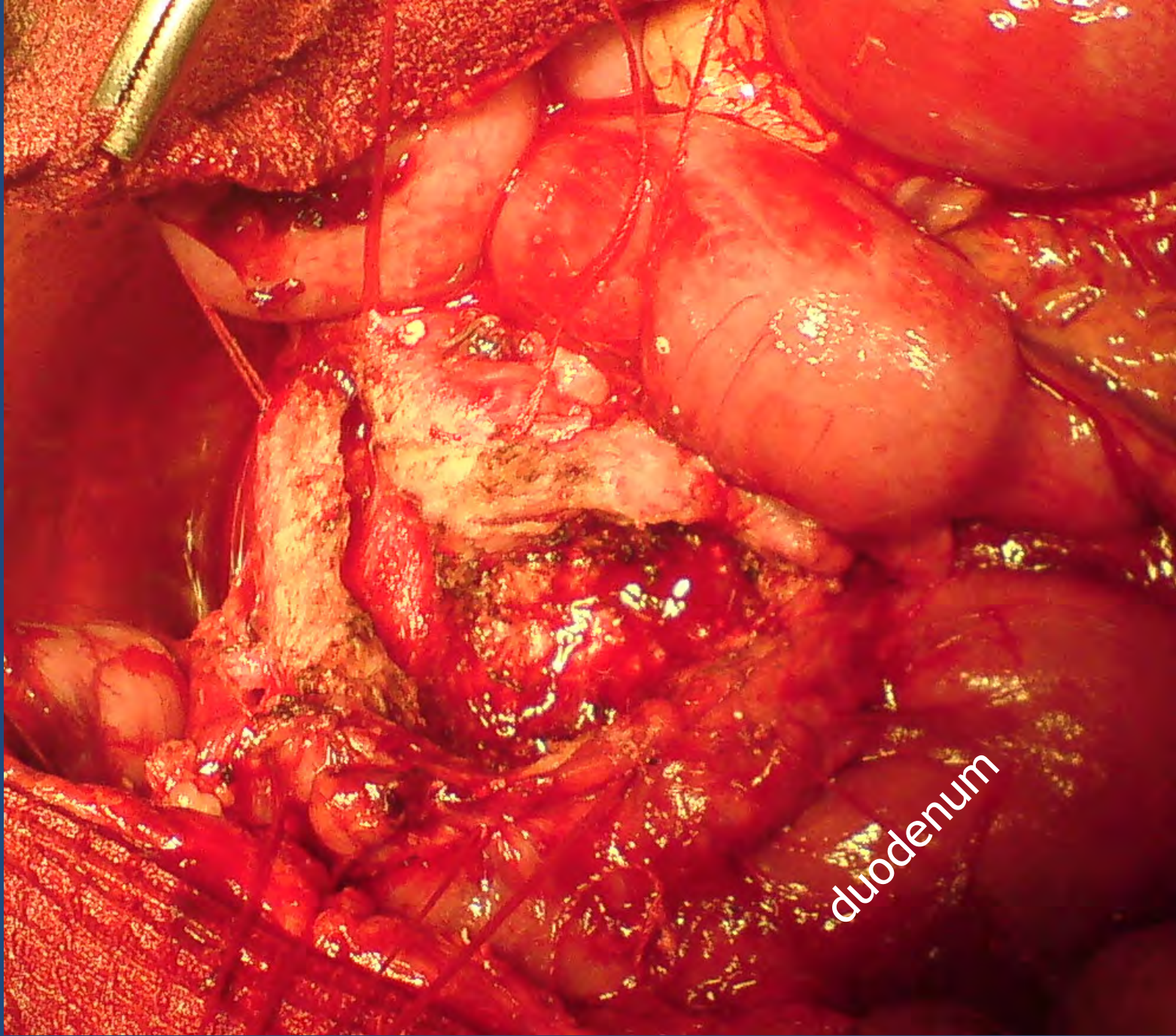






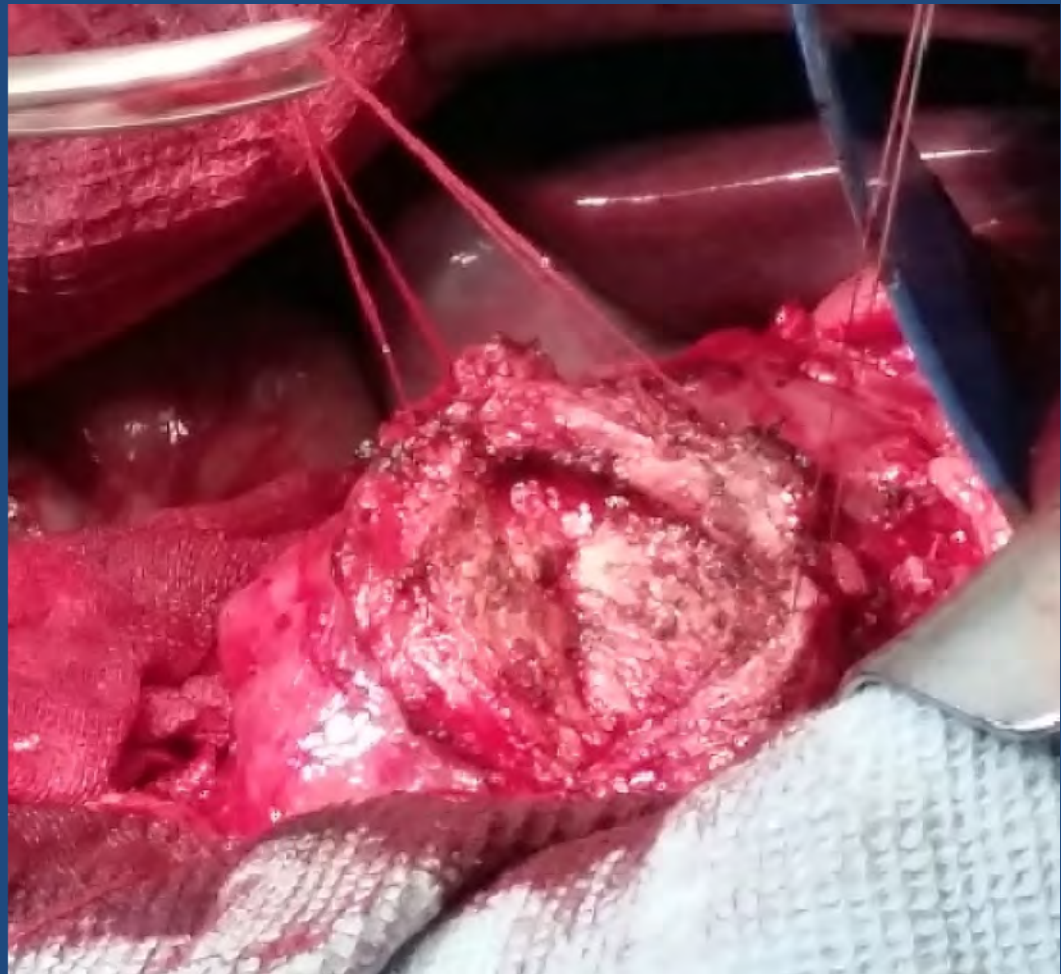
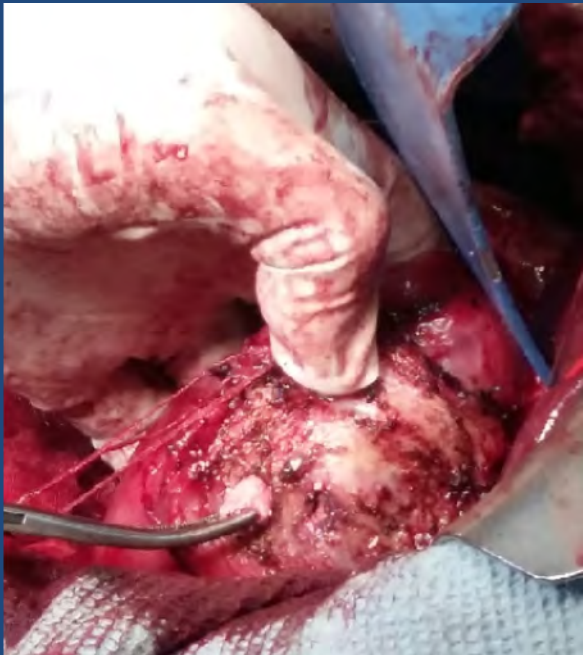
Ch.F. Frey, 1987





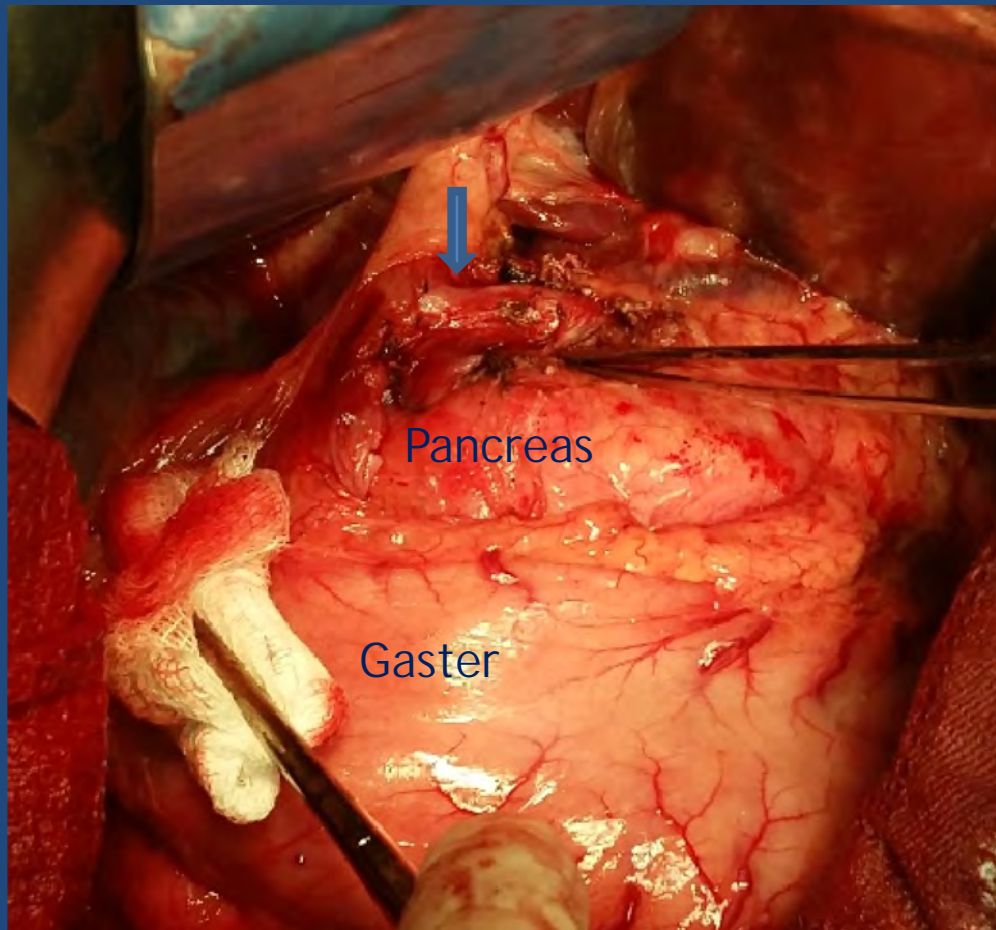
duodenum



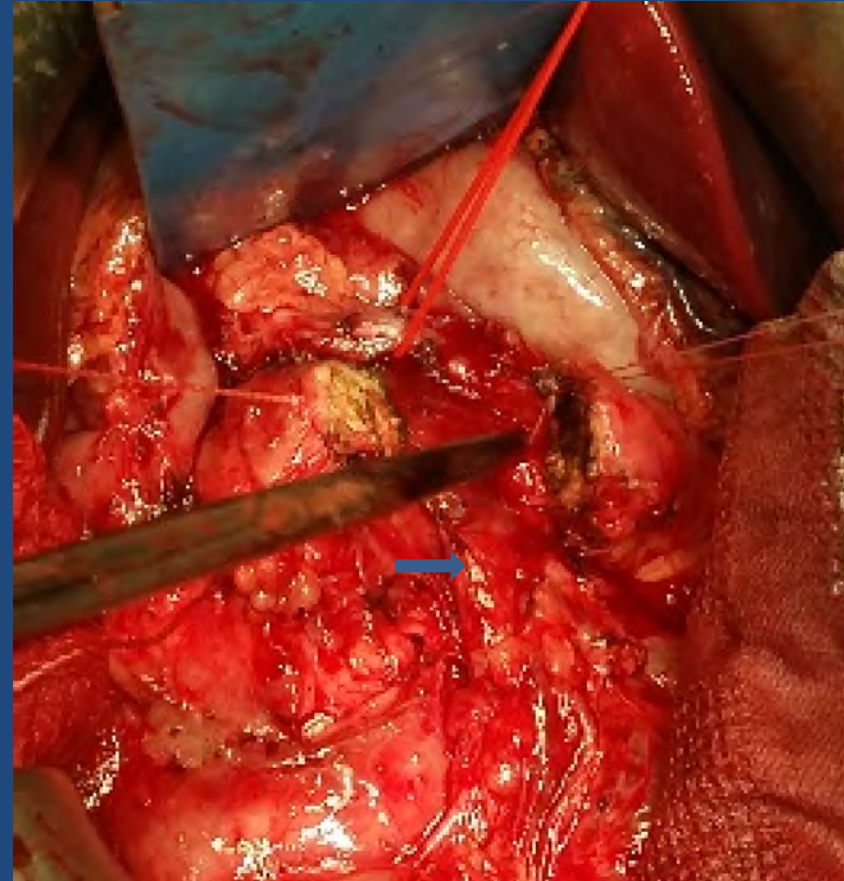
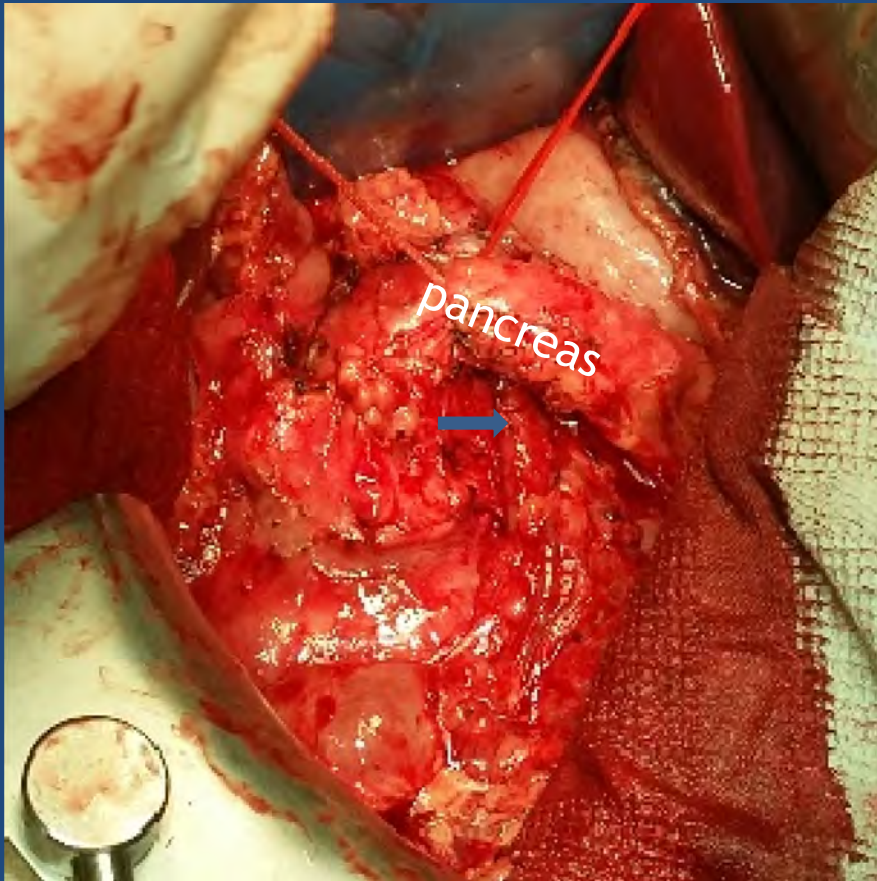


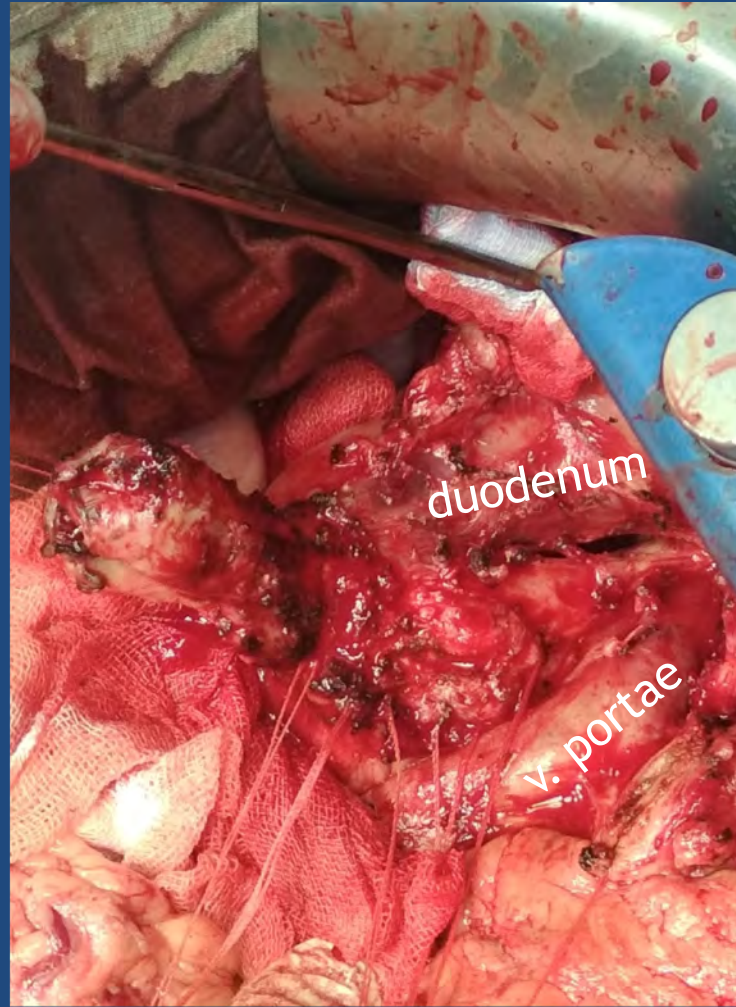
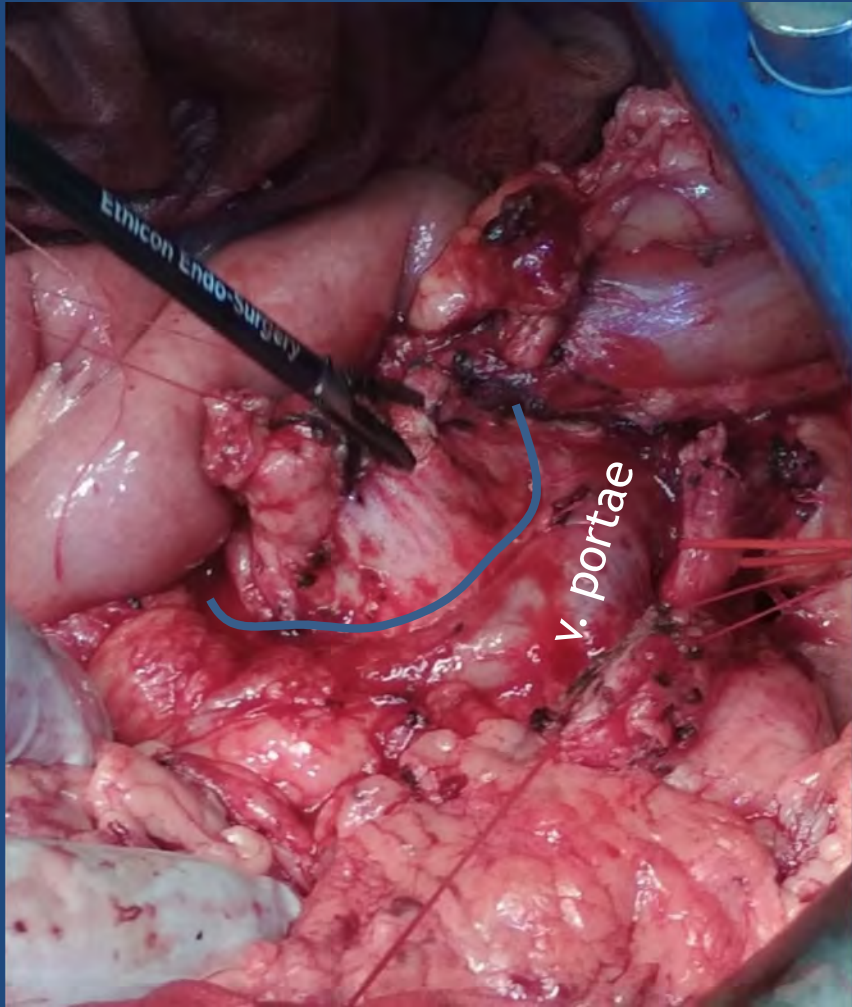
(),

a. gastroduodenalis

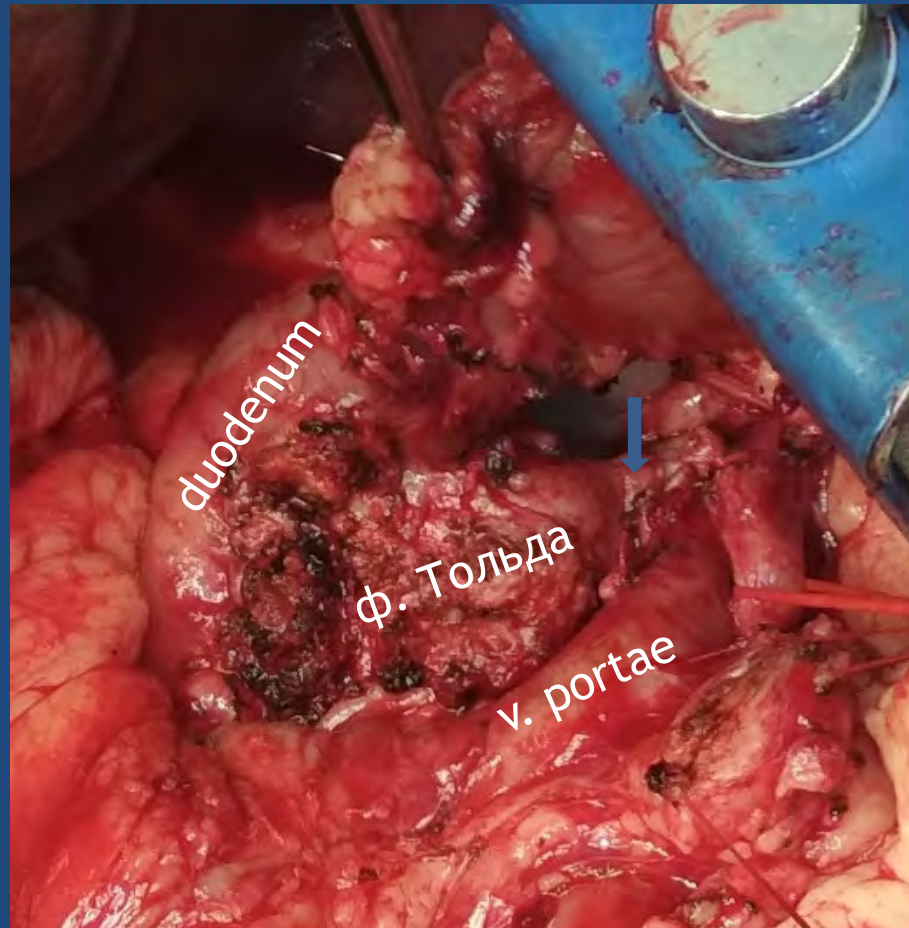


(),

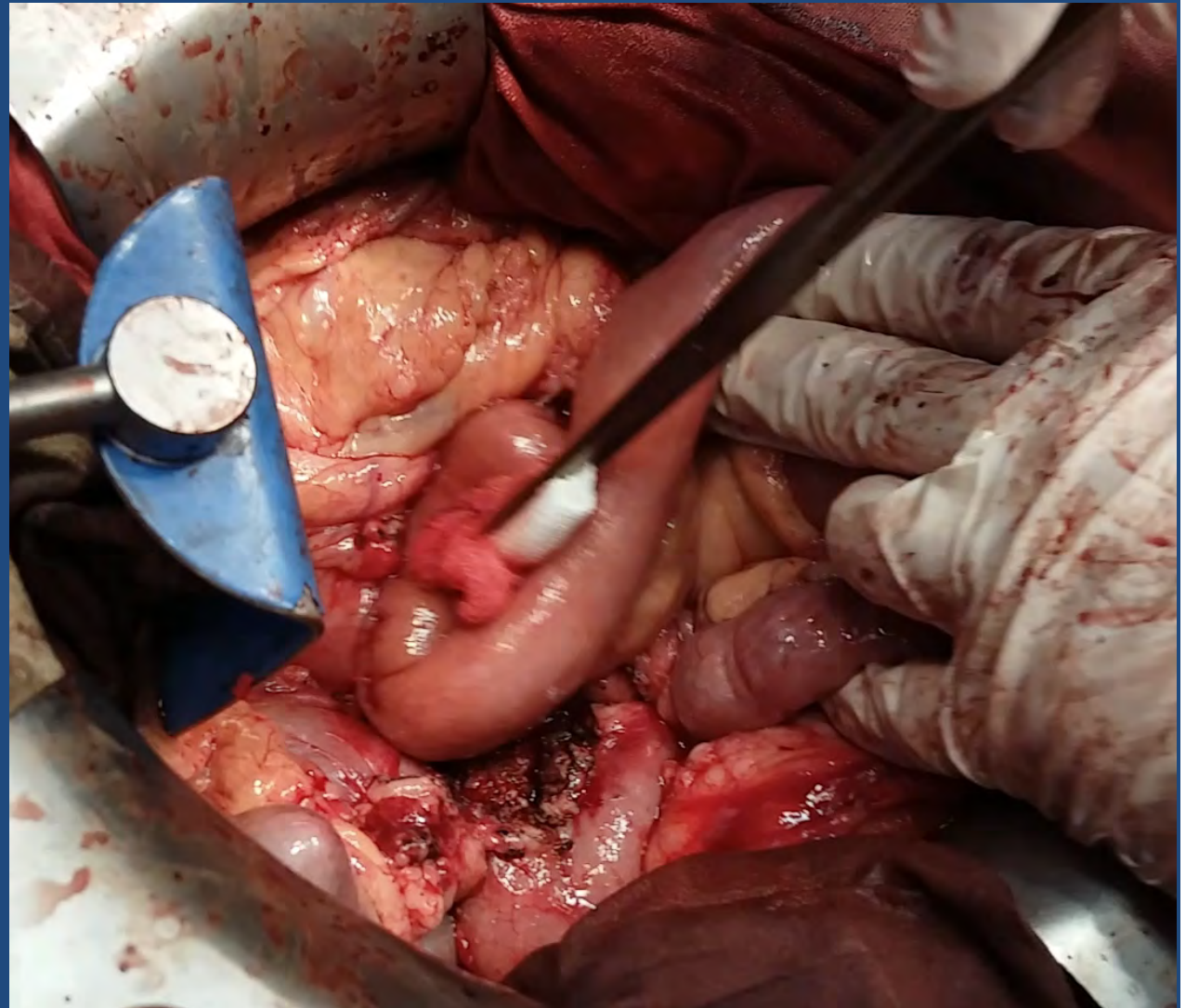




(-)



Blumgart L.H. ()



ü

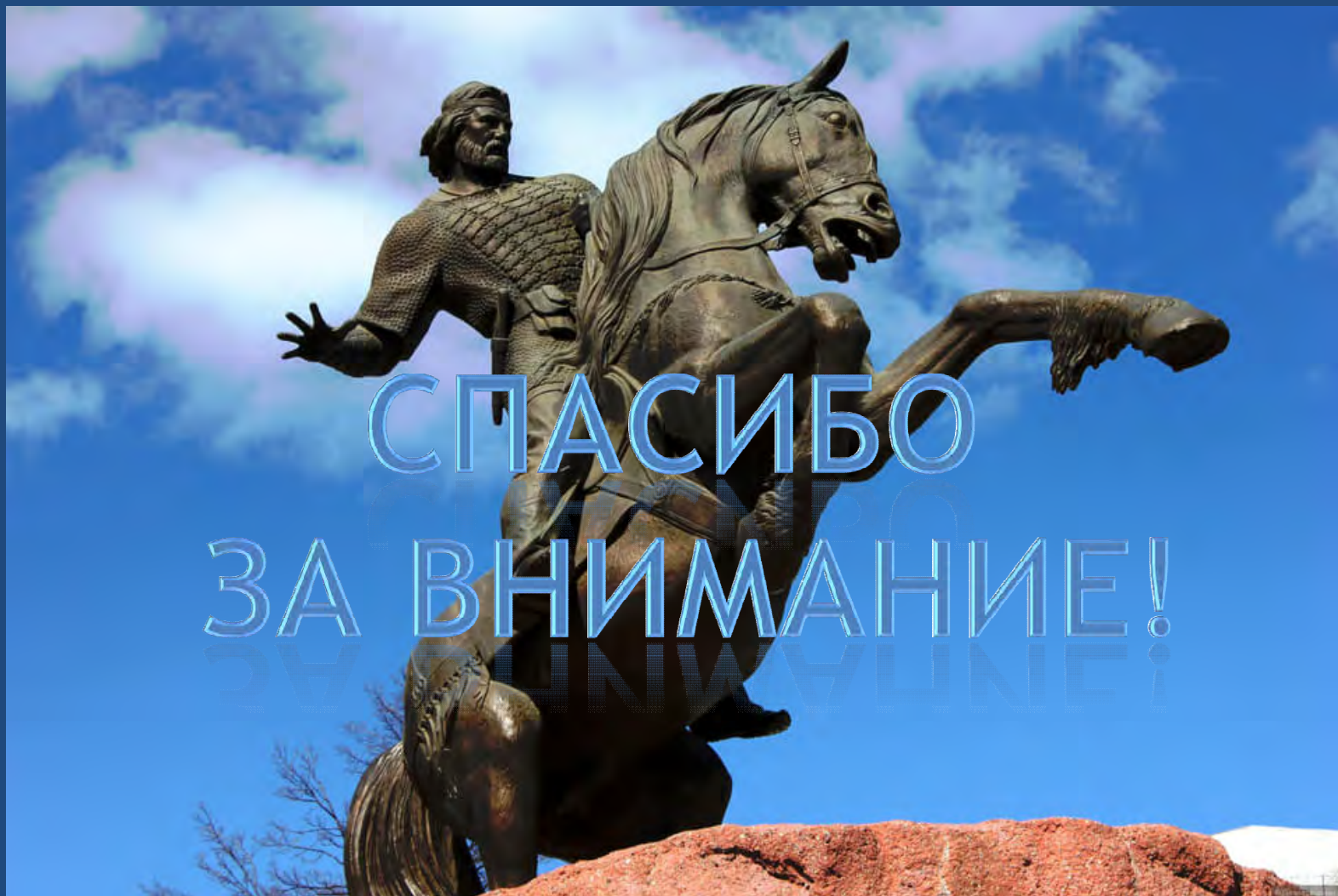
- -

-()

ü

ü

-



СПАСИБО
ЗА ВНИМАНИЕ!